

Multi Parameter System

the online system for permanent monitoring of water quality



properties of the multi parameter system

- permanent measuring and recording of
 - pH value
 - redox potential
 - dissolved Oxygen
 - turbidity
 - conductance
 - temperature
 - chlorine
- is modular constructed and expandable
- is easy and comfortable to run via a touch display
- integrated regulating and controlling functions are programmable as needed
- is prepared for data transfer via LAN, W-LAN, GSM-modem, UMTS
- is able to be linked via RS385, MODBUS, Ethernet or CAN-bus with PLC-systems
- easy integration and connection to local and superior control systems
- additional data recording and data visualisation on a PC
- transmission of alarm messages in case of limit value deviation to a cell phone

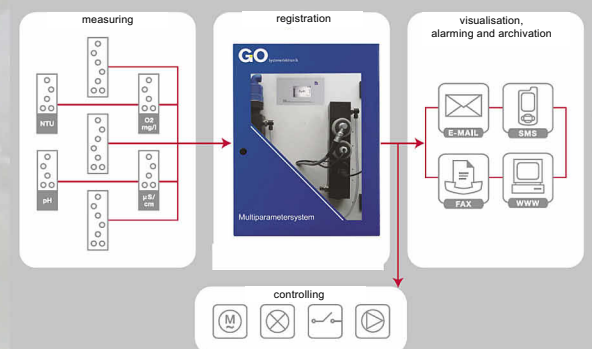
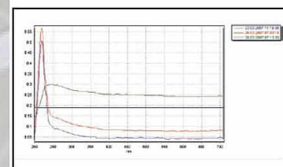
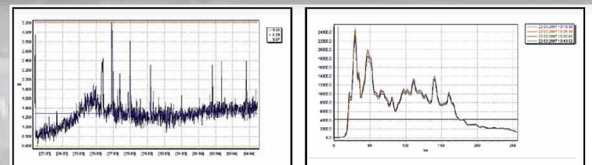
technical data

probes

| | measuring principle | measuring range |
|------------------|-----------------------------|-----------------------|
| conductivity | inductive | 5 ...2000 µS/cm |
| temperature | NTC | -10...+80°C |
| dissolved oxygen | galvanic cell | 0...200%; 0...20 mg/l |
| pH | ISFET | ph1...ph14 |
| turbidity | scattered light 90°, 880 nm | 0 ...10 FNU |
| ORP | platinum electrode | -2000...+2000 mV |
| chlorine | amperometric cell | 0 – 0,5; 0 – 20 mg/l |

mechanical and electrical data

| | |
|------------------|---|
| display | LCD-touchdisplay: 240 x 180 pixel display of measured values bargraphs function keys setting up of boarder and alarm values |
| interfaces | RS232, RS485, 9600 baud, div protocols, e.g. MODBUS CAN-Bus, USB Ethernet, 10MBit/s, div protocols, e.g. TCP/IP |
| sample outlet | pressureless |
| power supply | 90 - 260 V, 50 Hz, app 150 VA |
| env. Conditions | 5...35°C |
| mounting | hanging |
| protection class | IP 54 |
| weight | app 40 kg |
| dimensions | 700 x 600 x 320 mm |



innovative solutions for drinking water monitoring

